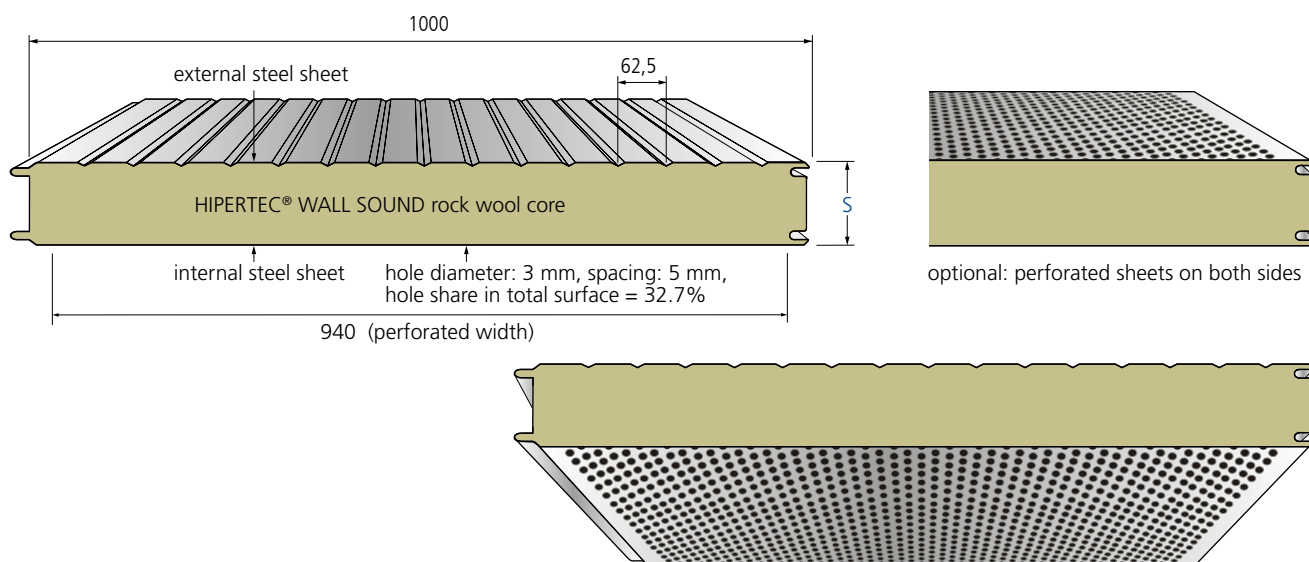




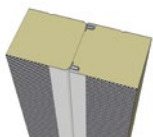
Hipertec® Wall Sound is a sandwich panel with an insulation core of mineral wool and steel cover sheets, the internal sheet being perforated. This panel is perfectly apt for buildings with high requirements for noise insulation and sound absorption. The design of the internal sheet improves room acoustics substantially. This system patented by Metecno applies a special fleece as trickle pro-

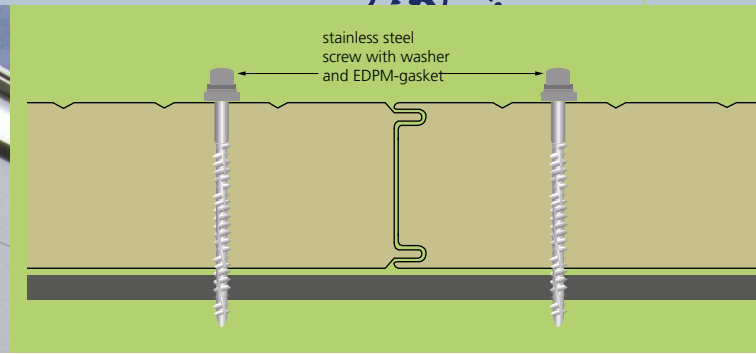
tection between the internal sheet and the rock wool core. Generally used as ceiling or partition wall, Hipertec® Wall Sound may also be used as external wall in specific cases, though it is generally not recommended to apply this panel in heated buildings or buildings with high moisture. More information is available in the download area [www.en.metecno.de](http://www.en.metecno.de).



dimensions in mm

type of element	core thickn. s mm	external steel sheet tN mm	internal steel sheet tN mm	weight kg / m <sup>2</sup>	thermal resistance R m <sup>2</sup> K / W	thermal conductivity [Ψ - joint effect]	
						U w/o Ψ W / m <sup>2</sup> K	U with Ψ W / m <sup>2</sup> K
HIPERTEC® WALL SOUND	60	0,60	0,60	15,3	1,34	0,711	0,731
	80	0,60	0,60	17,5	1,79	0,537	0,548
	100	0,60	0,60	19,7	2,25	0,432	0,438
	120	0,60	0,60	21,9	2,70	0,361	0,365
	150	0,60	0,60	25,2	3,38	0,290	0,292
	200	0,60	0,60	30,7	4,52	0,218	0,219
	240	0,60	0,60	35,1	5,42	0,182	0,183





**THERMAL CONDUCTIVITY**

$\lambda = 0.044 \text{ W / m.K}$  according to DIN 4108 and DIN EN 13162  
 The insulation values are regularly monitored by external bodies and may be applied without any further reduction

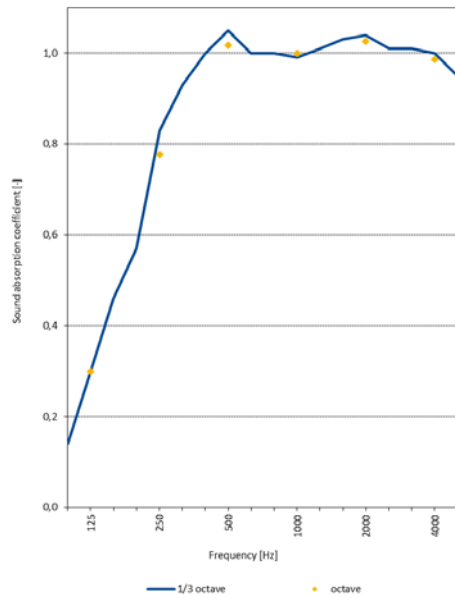
**STANDARD LENGTHS**

> 2,00 m to 25,00 m, greater lengths on request

**STANDARD COATING**

External and internal steel sheet: 25  $\mu\text{m}$  polyester

**SOUND ABSORPTION**



**CORROSION PROTECTION**

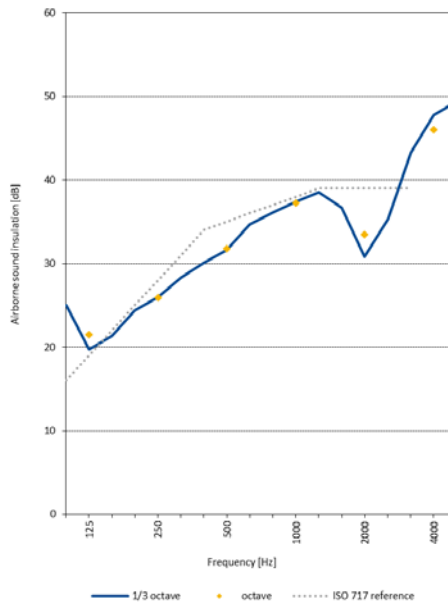
Tested according to DIN EN 10169:  
 External sheet: Class RC3  
 According to DIN EN ISO 12944-2:  
 External sheet: corrosivity category C3 corresponding to average protection duration for urban and industrial environments with moderate exposure to sulphur dioxide

**PACKAGING**

External and internal sheets provided with removable protective film, panel packages wrapped with banded plastic foil to protect from soiling

**SOUND INSULATION**

Rated sound insulation  $R_w \geq 31 \text{ dB}$



SUPPORTING WIDTHS FOR ACHIEVING FIRE TESTING				
SINGLE-SPAN INSTALLATION		horizontal installation		
core thickn. s		EI 30	EI 45	EI 60
120	partition	7,50 m*	6,00 m*	4,00 m*
120	outer wall i→o	7,50 m*	-	4,00 m*

maximum spans of exterior walls additionally influenced by wind load  
 \* not for application in Germany

frequency Hz	thickn. mm	125	250	500	1000	2000	4000
$\alpha_s$	60	0,30	0,78	1,02	1,00	1,03	0,99

